
GARDNER DENVER®

**3-525
2nd Edition
May, 1996**

DUPLEX POWER PUMP

5" STROKE

MODEL

FXF__B

PARTS LIST

**Gardner
Denver**

**MAINTAIN PUMP RELIABILITY AND PERFORMANCE WITH
GENUINE GARDNER DENVER, AJAX AND OPI
PARTS AND SUPPORT SERVICES**

Gardner Denver[®], AJAX[®], and OPI[®] genuine pump parts are manufactured to original tolerances and designed for optimum dependability. Design and material innovations are the result of years of experience with hundreds of different pump applications. Reliability in materials and quality assurance are incorporated in our genuine replacement parts.

Your authorized Gardner Denver, AJAX and OPI distributor offers all the backup you'll need. A worldwide network of authorized distributors provides the finest product support in the pump industry.

Your local authorized distributor maintains a large inventory of genuine parts and he is backed up for emergency parts by the Gardner Denver Machinery Inc. Master Distribution Center (MDC) in Memphis, Tennessee.

Your authorized distributor can support your Gardner Denver, AJAX and OPI pump needs with these services:

1. Trained parts specialists to assist you in selecting the correct replacement parts.
2. A full line of factory tested pump lubricants specifically formulated for use in Gardner Denver, AJAX and OPI pumps.
3. Repair and maintenance kits designed with the necessary parts to simplify servicing your pump.

Authorized distributor service technicians are factory-trained and skilled in pump maintenance and repair. They are ready to respond and assist you by providing fast, expert maintenance and repair services.

For the location of your local authorized Gardner Denver, AJAX and OPI distributor refer to the yellow pages of your phone directory or contact:

Distribution Center:
Gardner Denver Machinery Inc.
Master Distribution Center
5585 East Shelby Drive
Memphis, TN 38141
Phone: (901) 542-6100
(800) 245-4946
Fax: (901) 542-6159

Factory:
Gardner Denver Machinery Inc.
1800 Gardner Expressway
Quincy, IL 62301
Phone: (217) 222-5400
Fax: (217) 223-5897

INSTRUCTIONS FOR ORDERING REPAIR PARTS

When ordering parts, specify Pump MODEL and SERIAL NUMBER (see nameplate on unit). The Serial Number is also stamped on top of the cylinder end of the frame (cradle area).

All orders for Parts should be placed with the nearest authorized distributor.

Where NOT specified, quantity of parts required per pump or unit is one (1); where more than one is required

per unit, quantity is indicated in parenthesis. **SPECIFY EXACTLY THE NUMBER OF PARTS REQUIRED.**

DO NOT ORDER BY SETS OR GROUPS.

To determine the Right Hand and Left Hand side of a pump, stand at the power end and look toward the fluid end. Right Hand and Left Hand are indicated in parenthesis following a part name, i.e. (RH) & (LH), when appropriate.

For Operating and Service Instructions see:

SERVICE MANUAL 3-600

TABLE OF CONTENTS

	Page
Maintain Pump Reliability and Performance with Genuine Gardner Denver Parts and Support Services	1
Instructions For Ordering Repair Parts	1
Menu/Matrix	3
Frame Group	4
Jackshaft	5
Oil Stop Head	6
Eccentric & Shaft	7
Eccentric Shaft Bearing	7
Crosshead Rod & Crosshead	8
Stuffing Box	9
Stuffing Box Gland (Optional)	9
Fluid Cylinder	10
Cylinder Liners	11
Piston Rods & Nuts	11
Steel Insert – Type Piston	12
Follower Type Fluid Piston	13
Iron Solid–Type Piston With Cast Iron Rings	14
Cup–Type Pistons	15
Wing Guided Valve With Rubber Insert	16
Wing Guided Valve Hardened Steel Without Insert	17
Center Guided Valve Hardened Steel With Rubber Insert	18
Center Guided Valve Hardened Steel Without Rubber Insert	19
Wing Guided Valve Without Insert Bevelled Seat	20
Durabla Valve Stainless Steel (Optional)	21
Wing Guided Gravel Valve Hardened Steel With Rubber Insert	22
Delrin Ball Valve (Optional)	23
Ball Guided Spherical Valve (Optional)	24
Surge Chamber (Optional)	24
Valve Seat Puller Wing Guided & Delring Ball (Optional)	25
Valve Seat Puller Center Guided (Optional)	25
Liner Puller (Optional)	26
Crosshead Pin Bushing Puller (Optional)	26

DUPLEX POWER PUMP – MODEL FXF__B **MENU/MATRIX**

NOTICE TO CUSTOMER – To find the construction options for your pump unit, FILL IN THE BALANCE OF LETTERS OR NUMBERS FROM YOUR UNIT NAMEPLATE

COLUMN NUMBER:

FOLLOW THE LINE DOWN AND OVER FROM EACH SPACE THUS FILLED IN TO FIND THE APPROPRIATE CONSTRUCTION OPTION WITH WHICH YOUR MACHINE IS EQUIPPED. THE NUMBER "9" IN ANY COLUMN SPACE INDICATES "NOT APPLICABLE." THE NUMBER "8" IN ANY COLUMN SPACE INDICATES SPECIAL DESIGN – REFER TO FACTORY ORDER TICKET.

F	X	F			B					
1	2	3	4	5	6	7	8	9	10	11

COLUMNS 1, 2 & 3 – BASIC FAMILY

COLUMN 4 – TYPE SERVICE–MASTER CYLINDER SIZE–CONSTRUCTION

- A. Slush Service – 4–1/2" Master – 1 Piece Cast Iron
- B. Slush Service – 4" Master – 1 Piece Cast Iron
- C. Grout & Cement Service – 4–1/2" Master – 1 Piece Cast Iron
- D. Grout & Cement Service – 4" Master – 1 Piece Cast Iron
- E. Oil Service – 4" Master – 1 Piece Cast Iron
- F. Water Service – 4" Master – 1 Piece Cast Iron
- G. General Service – 4" Master – 1 Piece Cast Iron
- H. General Service – 4–1/2" Master – 1 Piece Cast Iron
- J. Oil Service – 4–1/2" Master – 1 Piece Cast Iron

COLUMN 5 – SIZE SELECTIVE

- | | (MASTER SIZE) | | (MASTER SIZE) |
|-----------|---------------|-----------|---------------|
| A. 4–1/2" | (4–1/2") | C. 3–1/2" | (4") |
| B. 4" | (4–1/2" & 4") | D. 3" | (4") |
| | | E. 2–1/2" | (4") |

COLUMN 6 – DESIGN VERSION

COLUMN 7 – LINER MATERIAL SELECTIVE

- A. Bronze – Standard for Water Service
- B. Hardened Steel – Standard for Slush, Grout & Cement, Oil and General Service
- C. Stainless Steel (Optional)

COLUMN 8 – PISTON TYPE SELECTIVE

- A. Bronze – Follower Type with Regular Cure Packing (Standard for Water Service – Low Temperature)
- B. Bronze – Follower Type with Rock Hard Packing (Optional for Water Service – High Temperature)
- C. Iron – Follower Type with Regular Cure Packing (Standard for General Service)
- D. Iron – Follower Type with Rock Hard Packing (Optional for General Service)
- E. Iron – Solid Type with Cast Iron Rings (Standard for Oil Service)
- F. Steel – Insert Type (Standard for Slush and Grout & Cement Service)
- G. Bronze – Cup Type (Optional)
- H. Iron – Cup Type (Optional)
- J. Steel – Cup Type (Optional)

COLUMN 9 – PISTON ROD MATERIAL & PACKING SELECTIVE

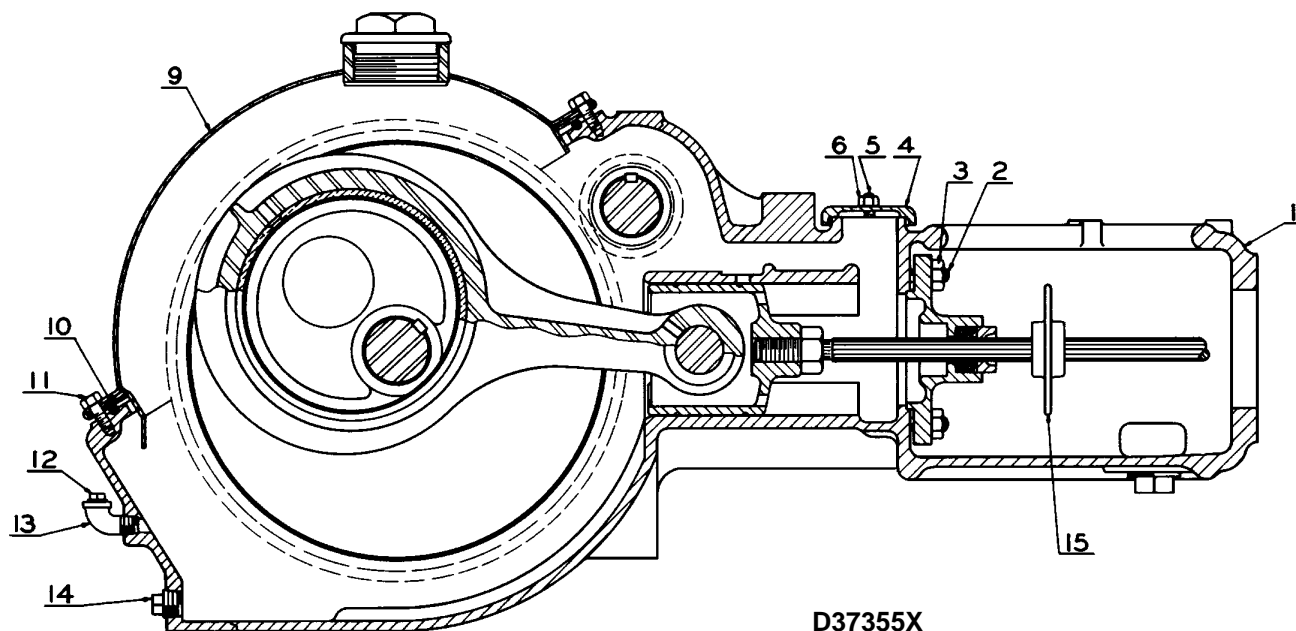
- A. Braided Synthetic Packing (Standard for Water Service)
- B. Hardened Steel Rod & Braided Synthetic Packing (Standard for Oil and General Service)
- C. Hardened Steel Rod & Molded Convex Packing (Standard for Slush or Grout & Cement Service)
- D. Hardened Steel Rod & Molded Rubber & Duck Packing (Optional)
- E. Chrome Plated Rod & Braided Synthetic Packing (Optional)
- F. Chrome Plated Rod & Molded Convex Packing (Optional)
- G. Chrome Plated Rod & Molded Rubber & Duck Packing (Optional)
- H. Stainless Steel Rod & Braided Synthetic Packing (Optional)
- J. Stainless Steel Rod & Molded Convex Packing (Optional)
- K. Stainless Steel Rod & Molded Rubber & Duck Packing (Optional)

COLUMN 10 – FLUID VALVE SELECTIVE

- A. Bronze – Wing Guided Type without Insert (Water Service)
- B. Bronze – Wing Guided Type with Rubber Insert (Water Service)
- C. Iron – Wing Guided Type without Insert (Oil, General or Water Service)
- D. Steel – Wing Guided Type without Insert (Oil or General Service)
- E. Steel – Wing Guided Type with Rubber Insert (Slush or Grout & Cement Service)
- F. Steel (Gravel Type) – Wing Guided with Insert (Slush or Grout & Cement Service)
- G. Steel – Center Guided without Insert (Oil or General Service)
- H. Steel – Center Guided Type with Rubber Insert (Slush or Grout & Cement Service)
- J. Steel Seat & Delrin Ball (Optional)
- K. Stainless Steel Seat & Delrin Ball (Optional)
- L. Stainless Steel – Durabla (Optional)
- M. Bronze – Ball Guided Spherical (Optional)
- N. Steel – Ball Guided Spherical (Optional)
- P. Stainless Steel – Ball Guided Spherical (Optional)

COLUMN 11 – OPTIONAL EQUIPMENT SELECTIVE

Order by Part Number and Description. Reference Numbers for your convenience only.



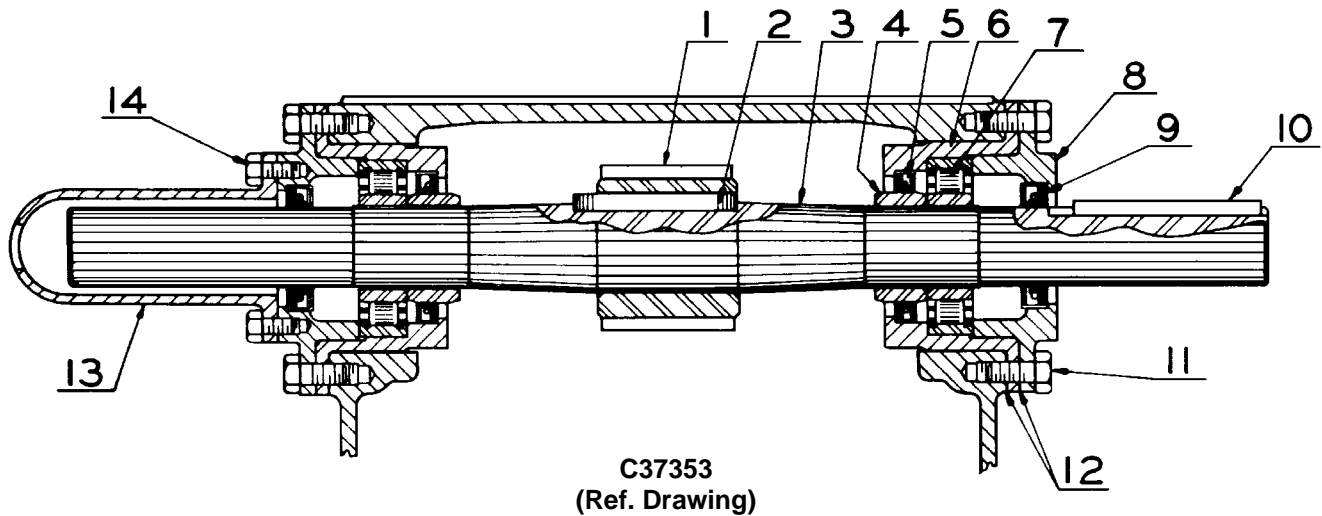
D37355X
(Ref. Drawing)

FRAME GROUP

Ref. No.	Name of Part	Qty.	All Models Part No.
1	FRAME ASSEMBLY, Includes Ref. No. 2, 3, 5, 6, 12, 13 & 14	1	1FXF172A
2	STUD, Oil Stop Head	4	79A238
3	NUT, Oil Stop Head	4	50B5
4	PLATE-INSPECTION	1	3AXG237
5	STUD, Inspection Plate	1	79A30
6	NUT, Inspection Plate Stud	1	50B3
9	HOOD	1	200FXF053
10	GASKET, Hood	68"	2009457
11	SCREW, Hood	8	75A130
12	PLUG, Oil Level	1	64AA4
13	ELBOW-PIPE STREET, Oil Level	1	64D4
14	PLUG, Oil Drain	1	64A5
15	BAFFLE, Piston Rod	2	2FXF840
*	CRADLE COVER	1	200FXF225
*	STUD	2	79A466
*	WING NUT	2	50H1

* Not shown.

Order by Part Number and Description. Reference Numbers for your convenience only.

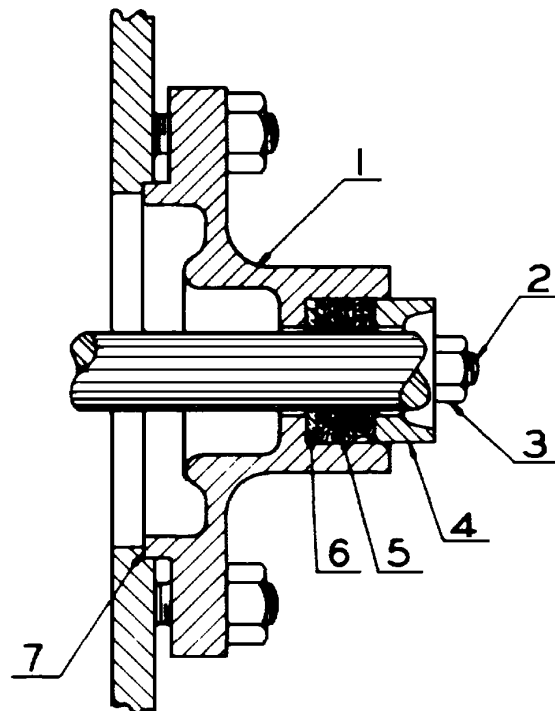


JACKSHAFT

Ref. No.	Name of Part	Qty.	All Models Part No.
	JACKSHAFT ASSEMBLY, Includes Ref. No. 1, 2 & 3	1	FXF374
1	GEAR-DRIVEN	1	FXF181
2	KEY, Jackshaft to Gear	1	35C46
3	JACKSHAFT	1	FXF371
4	SLEEVE-SHAFT	2	FXF289
5	SEAL-OIL, Bearing Housing	2	60G3
6	HOUSING-BEARING	2	FXF368
7	BEARING, Jackshaft	2	12W1
8	PLATE-BEARING RETAINING	2	FXF370
9	SEAL-OIL, Bearing Retaining Plate	2	60G38
10	KEY-Jackshaft	1	35B101
11	SCREW, Housing & Retaining Plate	12	655EE050
12	GASKET, Housing & Retaining Plate	4	25C653
13	COVER-SHAFT EXTENSION	1	200FXF490
14	SCREW, Shaft Extension Cover	3	75A68
*	FITTING-LUB	2	40E5

* Not Shown on Drawing.

Order by Part Number and Description. Reference Numbers for your convenience only.

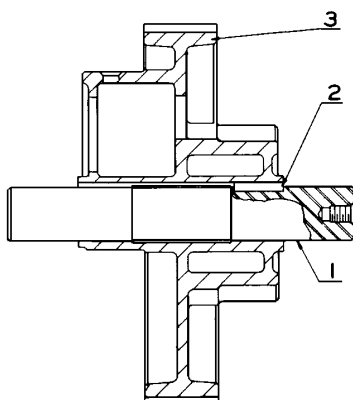


B37348
(Ref. Drawing)

OIL STOP HEAD

Ref. No.	Name of Part	Qty.	All Models Part No.
1	OIL STOP HEAD ASSEMBLY, Includes Ref. No. 2 & 3	2	2FXF495
2	STUD, Oil Stop Head	4	79A133
3	NUT, Oil Stop Head Stud	4	50B3
4	GLAND, Oil Stop Head	2	AXF238
5	PACKING, Oil Stop Head	2	60BG23
6	WASHER, Oil Stop Head	2	AF318
7	GASKET, Oil Stop Head	2	25C651

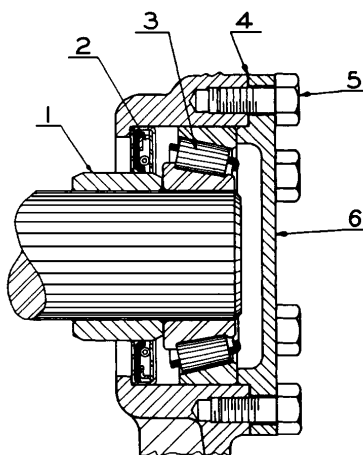
Order by Part Number and Description. Reference Numbers for your convenience only.



C41817
(Ref. Drawing)

ECCENTRIC & SHAFT

Ref. No.	Name of Part	Qty.	All Models Part No.
1	SHAFT-ECCENTRIC	1	FXF367
2	KEY	1	35C70
3	ECCENTRIC	1	1FXF255

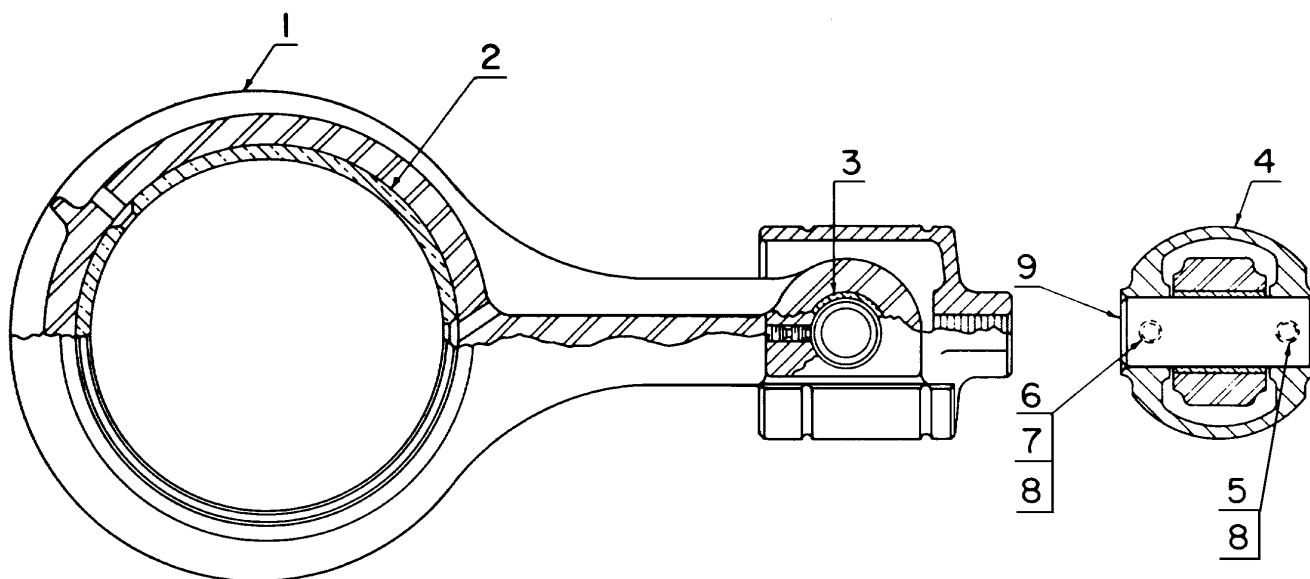


C37354
(Ref. Drawing)

ECCENTRIC SHAFT BEARING

Ref. No.	Name of Part	Qty.	All Models Part No.
1	SLEEVE-SHAFT	2	15AUX18
2	SEAL-OIL	2	60G220
3	BEARING, Eccentric Shaft	2	12C28
4	SHIM, Bearing Cover Plate	3	77G14
5	SCREW, Bearing Cover Plate	12	75AA1
6	PLATE-BEARING COVER	2	FXF366
*	FITTING-LUBRICATION	2	40E5
* Not shown.			

Order by Part Number and Description. Reference Numbers for your convenience only.

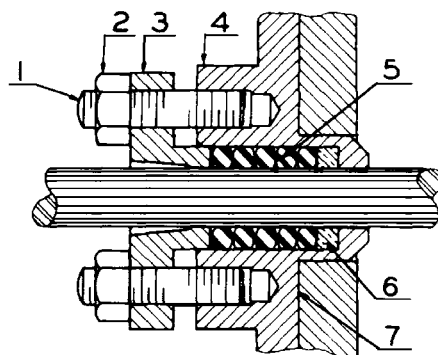


C75843
(Ref. Drawing)

CONNECTING ROD & CROSSHEAD

Ref. No.	Name of Part	Qty.	All Models Part No.
1	CONNECTING ROD, Includes Ref. No. 2 & 3	2	1FXF417
2	BUSHING	2	3FXF421
3	BUSHING, Crosshead Pin	2	AXF229
4	CROSSHEAD ASSEMBLY, Includes Ref. No. 5 thru 8	2	1FXF175X
5	SET SCREW-SOCKET HEAD	4	76J8
6	SET SCREW- SQUARE HEAD	2	76U32
7	PIN, Set Screw	4	62A153
8	NUT, Set Screw	2	50F3
9	PIN-CROSSHEAD	2	FXF189

Order by Part Number and Description. Reference Numbers for your convenience only.

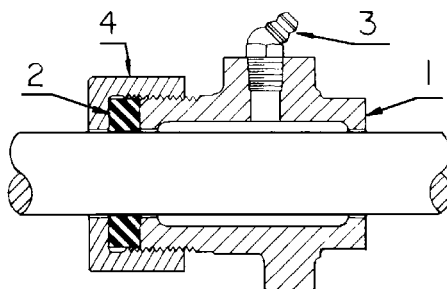


B37345
(Ref. Drawing)

STUFFING BOX

Ref. No.	Name of Part	Qty.	All Models Part No.
1	STUD, Stuffing Box	4	79A101C
2	NUT, Stuffing Box Stud	4	50AQ7C
3	GLAND	2	FF21*
4	STUFFING BOX ASSEMBLY, Includes Ref. No. 1 & 2	2	1FF14X
5	PACKING, Molded Rubber & Duck (Optional Slush Service)	2	60DA609
6	RING-JUNK	2	FF317
7	GASKET, Stuffing Box	2	25C650

* Not used on Models FXFA or FXFC_B



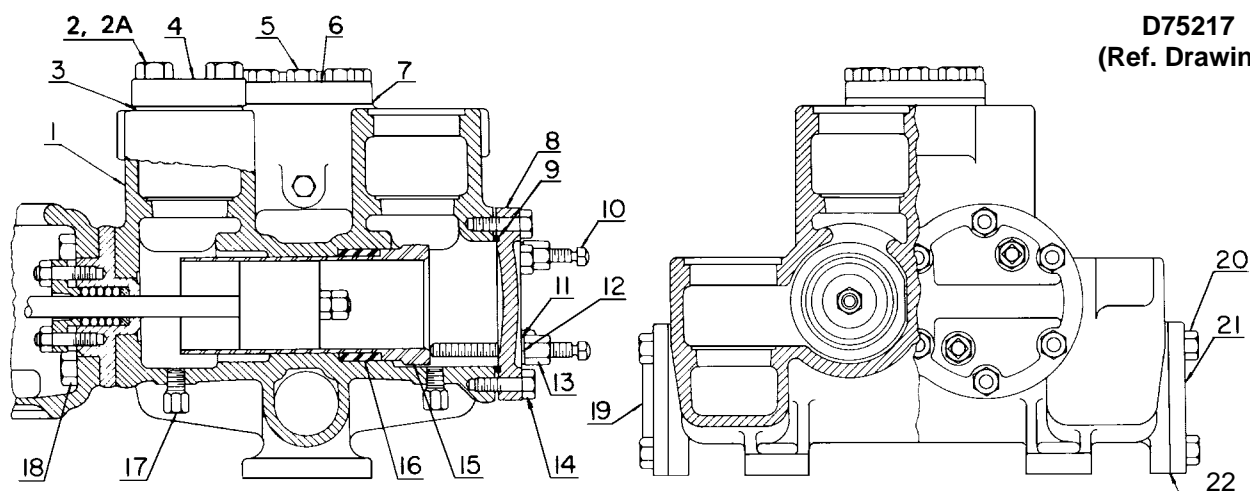
A76327
(Ref. Drawing)

STUFFING BOX GLAND (OPTIONAL)**

Ref. No.	Name of Part	Qty.	All Models Part No.
	GLAND ASSEMBLY, Includes Ref. No. 1 thru 4	2	200FXF008A
1	GLAND	2	200FXF008
2	PACKING-RING	2	60DD74
3	FITTING-LUBE	2	40E10
4	NUT	2	200FXG086

** Standard for Models FXFA and FXFC_B.

Order by Part Number and Description. Reference Numbers for your convenience only.



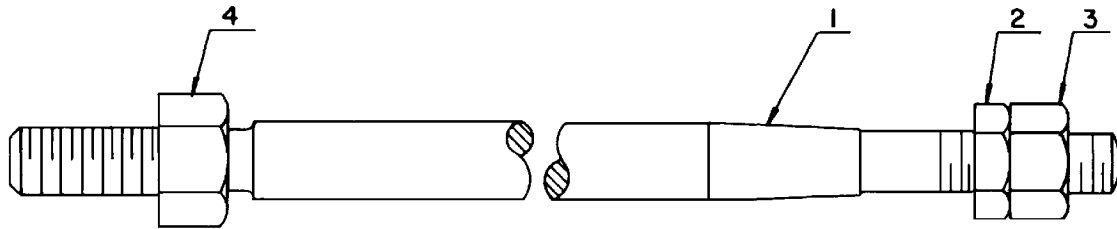
FLUID CYLINDER

Ref. No.	Name of Part	Qty.	Models	
			Part No.	Part No.
1	FLUID CYLINDER ASSEMBLY, Includes Ref. No. 2, 2A, 5, 14, 17, 18 & 20	1	1FF388	6FF29B
2	STUD, Valve Cover	16	79L11	79L11
2A	NUT HEX, Valve Cover Stud	16	50B9C	50B9C
3	GASKET, Valve Cover	8	25G27	25G27
4	COVER-VALVE	8	3FF147	3FF147
5	SCREW, Discharge Flange	8	655EF07Z	655EF07Z
6	FLANGE, Discharge	1	64CC4	64CC4
7	GASKET, Discharge Flange	1	25C502	25C502
8	HEAD-CYLINDER	1	3FF41	3FF41
9	GASKET, Cylinder Head	2	25G29	25G29
10	SET SCREW, Liner	4	76N8	76U214C
11	PACKING, Liner Set Screw	4	60BQ1	60BQ1
12	WASHER, Liner Set Screw	4	95F7	95F7
13	NUT, Liner Set Screw	4	50B7C	50B7C
14	SCREW, Cylinder Head	10	655EF07Z	655EF07Z
15	LINER		See Page 11	See Page 11
16	SLEEVE, Liner	2	2FF519	200FFF519
17	PLUG, Drain	5	64AU5	64AU5
18	SCREW, Frame to Cylinder	6	655EG10Z	655EG10Z
19	FLANGE, Suction Blank	1	AXF92	AXF92
20	SCREW, Suction & Blank Flange	8	655EF05Z	655EF05Z
21	FLANGE, Suction	1	64DC5	64DC5
22	GASKET, Suction & Blank Flange	2	25C501	25C501

Order by Part Number and Description. Reference Numbers for your convenience only.

CYLINDER LINERS
TWO (2) REQUIRED PER PUMP

Size	Models	Size	Bronze	Models	Stainless Steel
	FXFA_B FXFC_B FXFJ_B Hardened Steel			FXFB_B FXFD_B FXFE_B Hardened Steel	
4-1/2"	200FFF456	4"	6FF64	FF45640	20FF64
4"	201FFF456	3-1/2"	11FF64	FF45635	22FF64
		3"	13FF64	FF45630	24FF64
		2-1/2"	15FF64	FF45625	26FF64

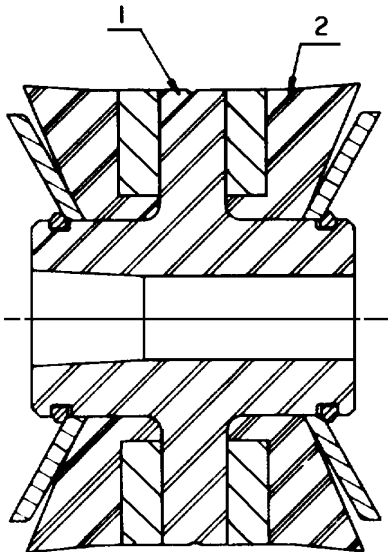


B74017
(Ref. Drawing)

PISTON RODS & NUTS
(GARDNER DENVER No. 1 TAPER)

Ref. No.	Qty. Per Pump	All FXF Models	Models			Stainless Steel
			Bronze	FXFB_B	FXFF_B	
				FXFD_B	FXFG_B	
				AND FXFE_B		
		Hardened Steel		Chrome Plated		
1	PISTON ROD, Includes Ref.					
	No. 2 & 3	2	21FXF183	8FXF183	25FXF183	7FXF183
2	NUT (Thin)	2	NONE	50Y8	NONE	50T57
3	NUT (Full)	2	50AW9	50X10	50AW9	50U8
4	NUT, Crosshead	2	50B9	50B9	50B9	50B9

Order by Part Number and Description. Reference Numbers for your convenience only.

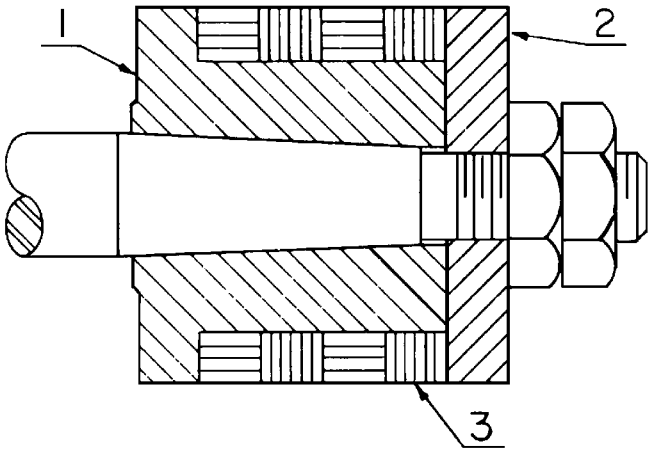


C76948
(Ref. Drawing)

STEEL INSERT – TYPE PISTON*
(STANDARD FOR SLUSH, GROUT & CEMENT SERVICE)

Ref. No.	Name of Part	Qty. Per Pump	Models		Models		
			FXFA_B FXFC_B 4-1/2"	FXFA_B FXFB_B FXFC_B FXFD_B 4"	3-1/2"	FXFB_B & FXFD_B 3"	2-1/2"
1	PISTON ASSEMBLY, Includes Ref. No. 2	2	207TBA405A	205TBA045A	203TBA045A	201TBA045A	45D278
2	INSERT GROUP, Includes Retaining Plates & Rings	2	TBA76000	TBA75998	TBA75996	TBA75994	45E41

Order by Part Number and Description. Reference Numbers for your convenience only.

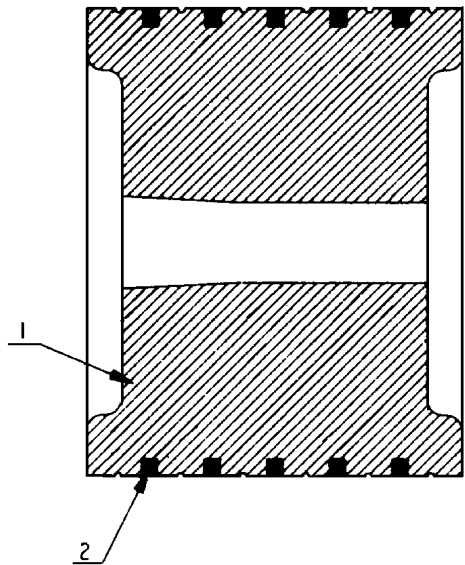


A75988
(Ref. Drawing)

FOLLOWER TYPE FLUID PISTON*
FOR WATER & GENERAL SERVICE
(GARDNER DENVER No. 1 TAPER)

No.	Name of Part	Qty.	Model FXFH_B 4-1/2"	Model FXFF_B FXFG_B FXFH_B 4"	Models FXFF_B AND FXFG_B		
					3-1/2"	3"	2-1/2"
1	BODY-PISTON (Iron)	2	FG45	AXG45	1AXG45	4AXG45	FF45
2	FOLLOWER-PISTON (Iron)	2	FG46	AXG46	1AXG46	3AXG46	FF46
1	BODY-PISTON (Bronze)	2	—	6AXG45	7AXG45	5AXG45	1FF45
2	FOLLOWER-PISTON (Bronze)	2	—	5AXG46	6AXG46	4AXG46	1FF46
3	PACKING, Regular Cure	See ()	60D16 (5)	60D18 (8)	60D25 (12)	60D11 (10)	60D26 (10)
3	PACKING, Rock Hard	See ()	60Y16 (5)	60Y18 (8)	60Y25 (12)	60Y11 (10)	60Y26 (10)

Order by Part Number and Description. Reference Numbers for your convenience only.

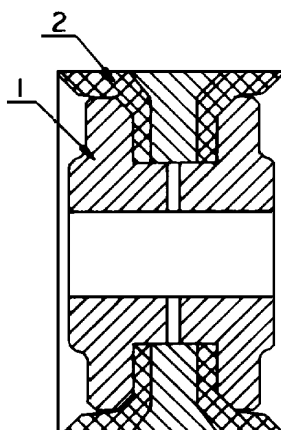


B76949
(Ref. Drawing)

**IRON SOLID-TYPE PISTON WITH CAST IRON RINGS
STANDARD FOR OIL SERVICE
(GARDNER DENVER No. 1 TAPER)**

Ref. No.		Qty.	Model FXFJ_B 4-1/2"	Models			Model FXFE_B 3"	2-1/2"
				FXFE_B FXFF_B FXFJ_B 4"	3-1/2"			
1	PISTON	2	FG350	AXG350	1AXG350	2AXG350	1FG350	
2	RING-PISTON	8	65A1	65A33	65A9	64A14	65A44	

Order by Part Number and Description. Reference Numbers for your convenience only.



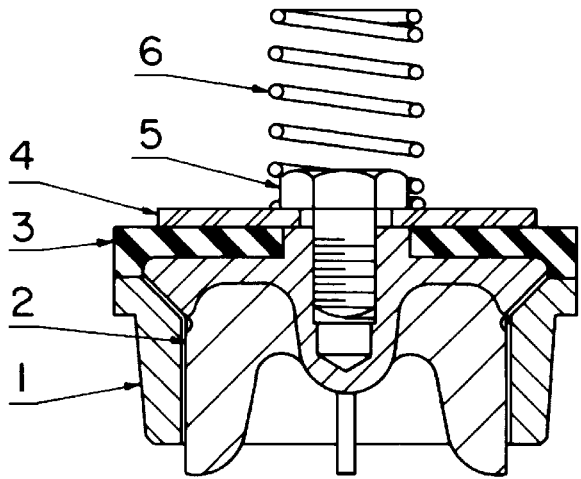
A76951
(Ref. Drawing)

CUP-TYPE PISTONS
IRON & STEEL FOR OIL AND GENERAL SERVICE
BRONZE FOR WATER SERVICE
(GARDNER DENVER No. 1 TAPER)

Ref. No.		Qty.	Model FXFH_B FXFJ_B 4-1/2"	Models
				FXFE_B FXFF_B FXFG_B FXFH_B FXFJ_B 4"
1	PISTON (Iron) (Includes Ref. Number 2)	2	P1GDL450	P1GDL400
1	PISTON (Steel) (Includes Ref. Number 2) . . .	2	P1GDL450S	P1GDL400S
1	PISTON (Bronze) (Includes Ref. Number 2)	2	— — — — —	P1GDL400B
2	CUP	4	60BB13	60BB11

Ref. No.		Qty.	Model 3-1/2"	Models FXFE_B, FXFF_B AND FXFG_B	
				3"	2-1/2"
1	PISTON (Iron) (Includes Ref. Number 2)	2	P1GDL350	P1GDL300	P1GDL250
1	PISTON (Steel) (Includes Ref. Number 2) . . .	2	P1GDL350S	P1GDL300S	P1GDL250S
1	PISTON (Bronze) (Includes Ref. Number 2)	2	P1GDL350B	P1GDL300B	P1GDL250B
2	CUP	4	60BB9	60BB7	60BB33

Order by Part Number and Description. Reference Numbers for your convenience only.



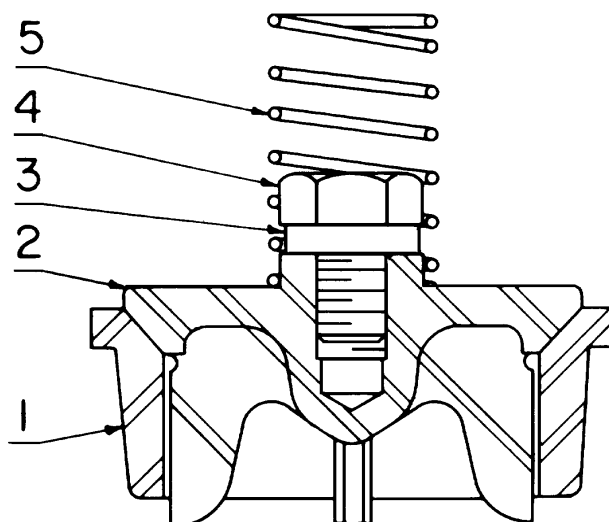
B75797
(Ref. Drawing)

**WING GUIDED VALVE
WITH RUBBER INSERT
(SLUSH, GROUT & CEMENT, WATER SERVICE)**

Ref. No.	Name of Part	Qty.	Models FXFA_B FXFB_B Part No.	Models FXFF_B Part No.
			Hardened Steel	Bronze
1	SEAT-VALVE	8	11FF39	6FF39
	ASSEMBLY, Includes Ref. No. 2 thru 5	8	FF928	8FF206A
2	VALVE-FLUID	8	18FF206	8FF206
3	INSERT	8	1FF452	1FF452
4	WASHER	8	95D51	95G11
5	SCREW	8	5FF156	7FF156
6	SPRING	8	78A171	78D72

For the above valve use one (1) 201FFF219A Valve Puller Assembly as shown on Page 25.

Order by Part Number and Description. Reference Numbers for your convenience only.



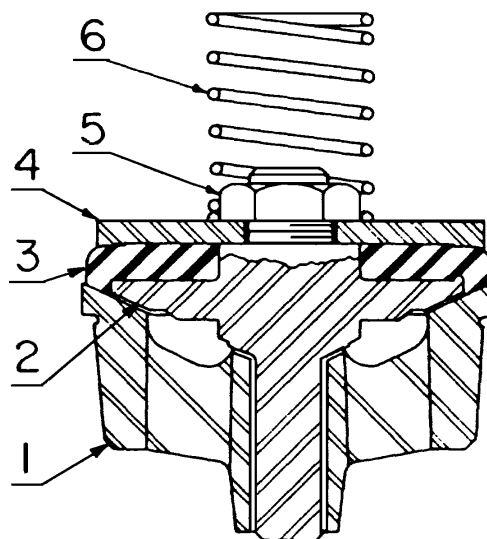
B75796
(Ref. Drawing)

**WING GUIDED VALVE
HARDENED STEEL WITHOUT INSERT
OIL OR GENERAL SERVICE**

Ref. No.	Name of Part	Qty.	Models
			FXFE_B FXFG_B
1	SEAT-VALVE	8	11FF39
2	FLUID VALVE ASSEMBLY, Includes Ref. No. 3 & 4	8	18FF206C
3	WASHER	8	95D136
4	SCREW	8	5FF156
5	SPRING	8	78A134

For the above valve use one (1) 201FFF219A Valve Puller Assembly as shown on Page 25.

Order by Part Number and Description. Reference Numbers for your convenience only.



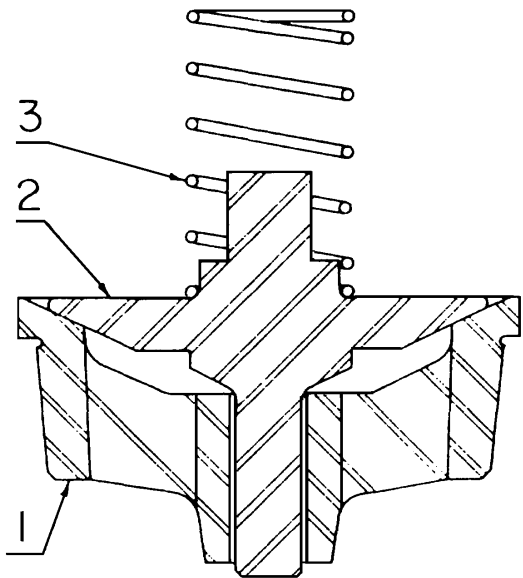
B75800
(Ref. Drawing)

**CENTER GUIDED VALVE
HARDENED STEEL WITH RUBBER INSERT
(SLUSH SERVICE)**

Ref. No.	Name of Part	Qty.	Models
			FXFA_B FXFB_B
1	SEAT-VALVE	8	1FF451
	FLUID VALVE ASSEMBLY, Includes Ref. No. 2 thru 5	8	1FF908
2	VALVE-FLUID	8	2FF482
3	INSERT	8	5FF452
4	WASHER	8	1FF279
5	SCREW	8	50G8
6	SPRING	8	78A171

For the above valve use one (1) 3AUX545 Valve Puller Assembly as shown on Page 25.

Order by Part Number and Description. Reference Numbers for your convenience only.



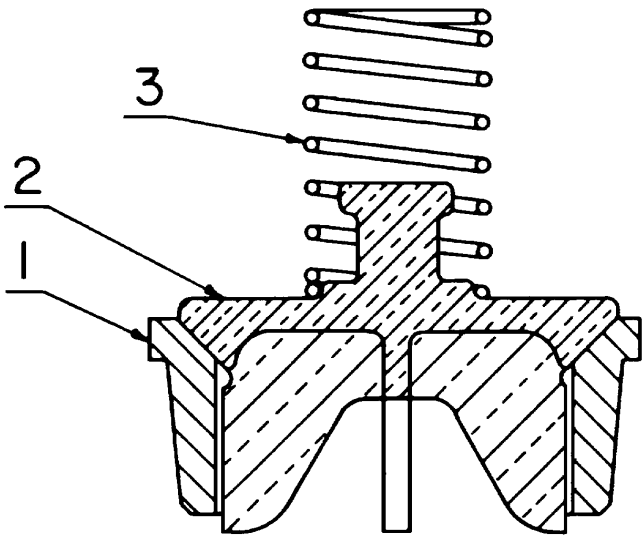
B75799
(Ref. Drawing)

**CENTER GUIDED VALVE
HARDENED STEEL WITHOUT RUBBER INSERT
(OIL OR GENERAL SERVICE)**

Ref. No.	Name of Part	Qty.	Models FXFE_B FXFG_B
1	SEAT-VALVE	8	1FF451
2	VALVE-FLUID	8	2FF482
3	SPRING	8	78A134

For the above valve use one (1) 3AUX545 Valve Puller Assembly as shown on Page 25.

Order by Part Number and Description. Reference Numbers for your convenience only.



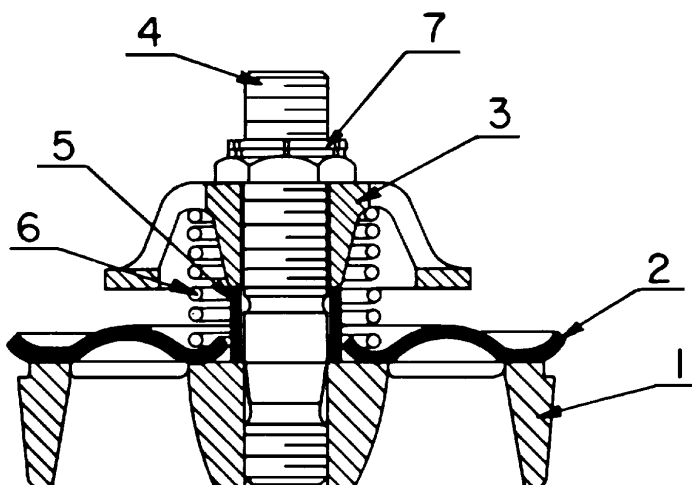
B75798
(Ref. Drawing)

WING GUIDED VALVE
WITHOUT INSERT BEVELLED SEAT
(OIL, WATER OR GENERAL SERVICE)

Ref. No.	Name of Part	Qty.	Models	Models
			FXFE_B FXFF_B FXFG_B Part No.	FXFF_B Part No.
			Iron Fitted	Brass Fitted
1	SEAT-VALVE	8	FF39	6FF39
2	VALVE-FLUID	8	FF69	1FF69
3	SPRING	8	78A172	78D72

For the above valve use one (1) 201FFF219A Valve Puller Assembly as shown on Page 25.

Order by Part Number and Description. Reference Numbers for your convenience only.



A76954
(Ref. Drawing)

**DURABLA VALVE
STAINLESS STEEL
GENERAL SERVICE (OPTIONAL)**

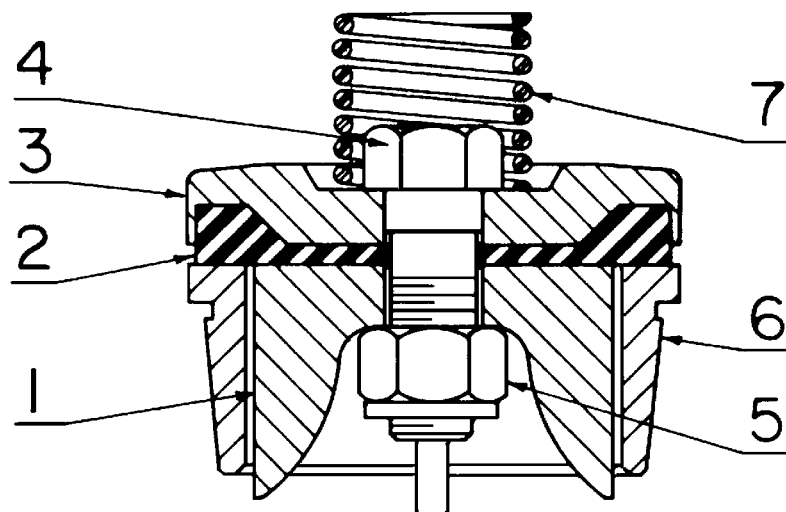
Ref. No.	Name of Part	Qty.	Models FXFG_B
	FLUID VALVE ASSEMBLY, Includes Ref. No. 1 thru 7	8	2FF1602
1	SEAT-VALVE, Includes Ref. No. 4 *	8	17FF39A
2	DISC	8	90AN22
3	GUARD	8	50AK10
4	STUD**	8	79AG13
5	SLEEVE	8	80K13
6	SPRING	8	78R10
7	NUT	8	50AK14
Ø	COVER-VALVE **	8	7FF147

* Stud furnished with Seat may be purchased separately.

** Durabla valves require the above listed cover in place of valve covers shown on cylinder list.

Ø Not shown on drawing.

Order by Part Number and Description. Reference Numbers for your convenience only.



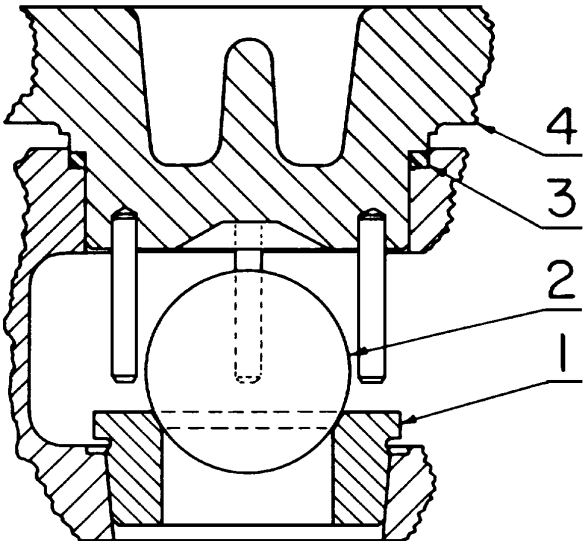
B75688
(Ref. Drawing)

**WING GUIDED GRAVEL VALVE
HARDENED STEEL WITH RUBBER INSERT
(SLUSH, GROUT & CEMENT SERVICE)**

Ref. No.	Name of Part	Qty.	Models
			FXFA_B FXFB_B FXFC_B FXFD_B
	FLUID VALVE ASSEMBLY, Includes Ref. No. 1 thru 5	8	200FFF482A
1	VALVE-FLUID	8	200FFF482
2	INSERT	8	200FFF106
3	WASHER-VALVE	8	200FFF279
4	SCREW	8	200FFF655
5	LOCKNUT	8	50AF7
6	SEAT	8	202FFF039
7	SPRING (Steel)	8	78A171

For the above valve use one (1) 201FFF219A Valve Puller Assembly as shown on Page 25.

Order by Part Number and Description. Reference Numbers for your convenience only.



B75760
(Ref. Drawing)

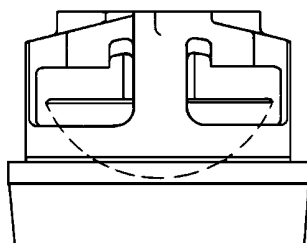
**DELRIN BALL VALVE
GENERAL SERVICE (OPTIONAL)**

Ref. No.	Name of Part	Qty.	Model FXFG_B	
			Part No.	Part No.
			Steel	Stainless Steel
1	SEAT-VALVE	8	200FFF039	201FFF039
2	VALVE-BALL, Delrin	8	200FFF481	200FFF481
3	GASKET, Valve Cover	8	25G27	25G27
4	COVER-VALVE *	8	200FFF147A	200FFF147A

For the above valve use one (1) 201FFF219A Valve Puller Assembly as shown on Page 25.

* Ball valves require the above listed valve covers in place of valve covers shown on cylinder list.

Order by Part Number and Description. Reference Numbers for your convenience only.

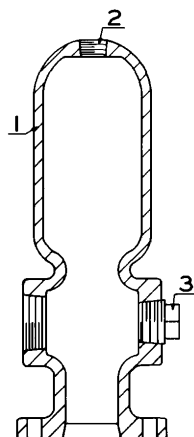


A76953
(Ref. Drawing)

**BALL GUIDED SPHERICAL VALVE
OIL, WATER OR GENERAL SERVICE
(OPTIONAL)**

Ref. No.	Name of Part	Qty.	Models	Model	Model
			FXFE_B FXFG_B Part No.	FXFF_B Part No.	FXFG_B Part No.
			Steel	Bronze	Stainless Steel
1	FLUID VALVE ASSEMBLY	8	3FF1614	FF1614	6FF1614
Ø	COVER-VALVE, FLUID CYLINDERS * ...	8	7FF147	7FF147	7FF147

* Ball Guided Spherical valves require the above listed covers in place of valve covers shown on cylinder list.

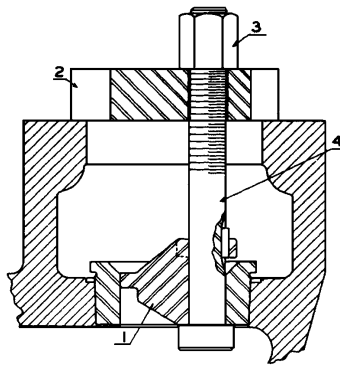


A38311
(Ref. Drawing)

**SURGE CHAMBER
(OPTIONAL)**

Ref. No.	Name of Part	Qty.	All Models
1	SURGE CHAMBER ASSEMBLY, Includes Ref. No. 2 & 3	1	1FF44X
2	PLUG-CSK. PIPE, Top	1	64B6
3	PLUG, Side	1	64A9
Ø	SCREW	8	655EF07Z
Ø	Not shown on drawing.		

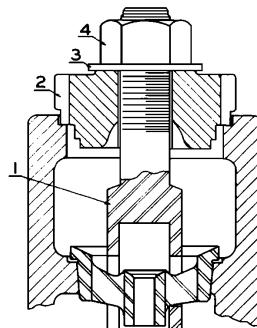
Order by Part Number and Description. Reference Numbers for your convenience only.



C37974
(Ref. Drawing)

**VALVE SEAT PULLER
WING GUIDED & DELRING BALL
(OPTIONAL)**

Ref. No.	Name of Part	Qty.	All Models	
			Part No.	Part No.
			Wing Guided	Ball Valves
	PULLER ASSEMBLY, Includes Ref. No. 1 thru 4	1	201FFF219A	200FFF219A
1	PULLER	1	201FFF219	200FFF219
2	PLATE-PULLER	1	2AUX292	2AUX292
3	NUT	1	50C11	50C11
4	BOLT-PULLER	1	2AUX235	2AUX235

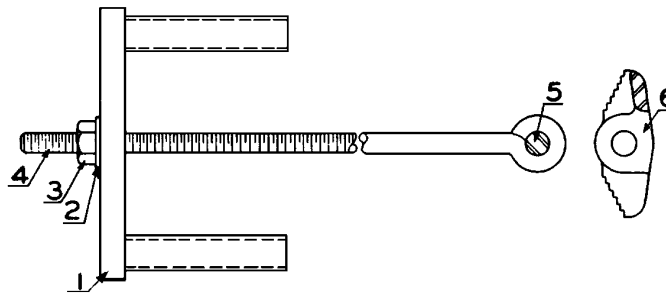


B37975
(Ref. Drawing)

**VALVE SEAT PULLER
CENTER GUIDED
(OPTIONAL)**

Ref. No.	Name of Part	Qty. Per Pump	All Models
	PULLER ASSEMBLY, Includes Ref. No. 1 thru 4	1	3AUX545
1	PULLER	1	AUX549
2	PLATE-PULLER	1	4AUX292
3	WASHER	1	95A22
4	NUT	1	50T161

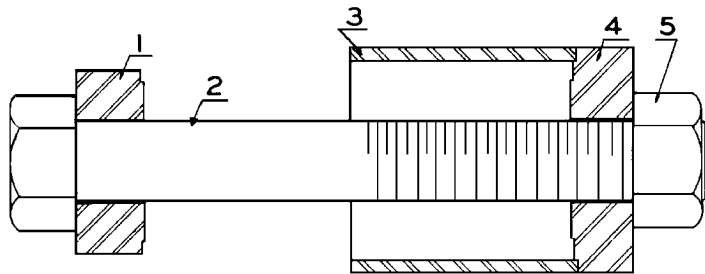
Order by Part Number and Description. Reference Numbers for your convenience only.



B37959
(Ref. Drawing)

**LINER PULLER
(OPTIONAL)**

Ref. No.	Name of Part	Qty.	All Models
	PULLER ASSEMBLY, Includes Ref. No. 1 thru 6	1	FF284
1	TOOL, Liner Puller	1	1FG346
2	WASHER-PLAIN	1	95A8
3	NUT	1	50B8
4	BOLT-PULLER	1	FG344
5	PIN	1	62A93
6	PULLER	1	FF345



C37973
(Ref. Drawing)

**CROSSHEAD PIN BUSHING PULLER
(OPTIONAL)**

Ref. No.	Name of Part	Qty.	All Models
	PULLER ASSEMBLY, Includes Ref. No. 1 thru 5	1	FXF1585
1	PLATE	1	FXF1277
2	BOLT-PULLER	1	FXG1279
3	BUSHING	1	FXG1278
4	PLATE-PULLER	1	FXG1276
5	NUT	1	50T67

北京

信德迈科技(北京)有限公司CNMEC Technology

北京朝阳区胜古中路2号金基业大厦201室

邮编：100029

电话：010-8428 2935 13910962635

传真：010-8428 8762

主页：[//www.cnmec.biz](http://www.cnmec.biz)

电子邮件：sales@cnmec.biz

西安

西安嘉岳自动化技术有限公司Garye Automation

地址：西安经开区凤城二路天地时代广场B座23层22312室

邮编：710016

电话：029 - 8610 8648 15319759129

传真：029 - 8610 6806

主页：<http://www.garye.cn>

电子邮件：sales@garye.cn

Gardner
Denver

For additional information contact your local representative or
Gardner Denver Machinery Inc., Customer Service Department,
1800 Gardner Expressway, Quincy, Illinois 62301
Telephone: (800) 682-9868 FAX: (217) 224-7814



Sales and Service in all major cities.

For parts information, contact Gardner Denver,
Master Distribution Center, Memphis, TN
Telephone: (800) 245-4946 FAX: (901) 542-6159

Specifications subject to change without notice.
Copyright 1996 Gardner Denver Machinery Inc.

Litho in U.S.A.